



Putting Children First

**Offer day:
3 March
2025**

Islington Schools: Inspiring Learning and Achievement

Your guide to the school application process for children born between: **1 September 2013 and 31 August 2014**

Closing date: 31 October 2024






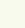
www.islington.gov.uk/admissions



ISLINGTON
For a more equal future

Location map

Key

- Secondary schools
-  Rail Stations
-  Underground Stations
-  Parks and open space
-  Major roads
-  Minor roads
-  Rails lines

1. Arts and Media School, Islington
2. Beacon High
3. Central Foundation Boys' School
4. City of London Academy, Highbury Grove
5. City of London Academy, Highgate Hill
6. City of London Academy, Islington
7. Elizabeth Garrett Anderson School
8. Highbury Fields School
9. St Aloysius' College
10. St Mary Magdalene Academy



This brochure is for reference only. All the hyperlinks that you see are clickable in the digital version of the brochure that can be found online at www.islington.gov.uk/admissions

Welcome

Providing good quality schools and educational opportunities for Islington's young people is a top priority for the borough. We are passionate about supporting children and young people to have the best start in life. At the heart of that ambition lies providing high-quality learning.

Our secondary schools have a lot to be proud of and consistently strive to deliver positive outcomes for every pupil in our schools. Last year, 98% of Islington Year 11 leavers moved into education, employment or training with most remaining in learning. Our ambition is for local schools to continue to improve through strong leadership, rigorous standards and creative teaching.

We want every child to be given the attention they need to develop and thrive. Our ambitious Education Plan sets out how we will ensure that every child, whatever their background or starting point, has the same opportunity and ambition to reach their educational potential in a good Islington school.

All our schools can boast an outstanding enrichment offer – like music, the arts, sports and careers – which can help children open doors to new passions and interests, be more resilient and gain the knowledge and life skills they need for a fulfilling future.

There are three pillars to our enrichment programme: '11 by 11' seeks to give all young people equal access to the world-famous cultural opportunities on their doorstep; Music Education Islington is our partnership with Guildhall School of Music and Drama, which offers high-quality music education to all children and young people in Islington; 'World Of Work' is our careers education programme, providing students with access to businesses through career insights, workshops, visits and placements to improve awareness of good jobs and careers.

This is all part of our commitment to a more equal Islington, and our ambition to make Islington the best place for young people to grow up.

This brochure outlines all the information you need to choose a secondary school that is right for your child. If you need any help or advice about making an application, our School Admissions team is here to help. I wish your child every success for their move into secondary education.

Signature



Councillor Michelline Ngongo

Executive Member for Children, Young People and Families



Table of contents

Section 1: Before you apply	6
About schools in Islington	7
Dates to remember	8
Top tips before you apply	9
Section 2: How to apply	10
Apply online	11
About school applications	13
Admission criteria for community schools	19
Criteria flowchart	22
Table of school places	23
Section 3: What happens next?	25
What happens to your application?	26
Waiting lists and appeals	28
University Technical Colleges and Studio Schools	30
Applying during the school year	31
Section 4: Islington's Schools and Sixth Forms	33
Arts and Media School, Islington	34
Beacon High	35
Central Foundation Boys' School	36
City of London Academy, Highbury Grove	37
City of London Academy, Highgate Hill	38
City of London Academy, Islington	39
Elizabeth Garrett Anderson School	40
Highbury Fields School	41
St Aloysius' College	42
St Mary Magdalene Academy	43
Dame Alice Owen's School, Potters Bar	44
Section 5: Other Sixth Form options	45
City and Islington Sixth Form College	46
London Screen Academy (LSA)	47

Section 6: Useful information and contacts	48
Financial assistance	49
Additional educational needs	51
Attendance matters: every day counts!	52
Getting to School	53
Advice and support	55
Glossary	57
School key dates	61

Section 1: Before you apply



About schools in Islington

Top of the class!

Did you know that pupils in Islington secondary schools achieved stronger results than the national averages at the end of Key Stage 4 (GCSEs and equivalent) in 2023. Islington pupils achieved a higher attainment 8 score (46.7) than national (46.4), and the Islington average score improved by about one point compared to the pre-pandemic results in 2019. Higher proportions of Islington pupils achieved standard passes (grade 4 and above) and strong passes (grade 5 and above) in English and Maths than pupils nationally.

The aim of this brochure is to help you make an informed decision about which school will best suit your child. If you do need any extra information, please email us with your query at admissions@islington.gov.uk or call us on 020 7527 5515.

Islington's Community of Schools

Islington's Community of Schools work closely with one another to meet the diverse needs of children living or going to school in the borough.

The Community of Schools is made up of academies, community, foundation, free, trust, and voluntary-aided schools, and includes co-educational and single-sex settings. For details of how these schools operate, please refer to the [glossary](#).

Dates to remember

Dates	What Happens
September 2024	You can apply online from 1 September 2024 to 31 October 2024 .
25 October 2024	Recommended application return date: submit your online application by this date. If you miss the deadline, your application will not be processed until after all on-time applications.
31 October 2024	Application deadline: this is the final date for you to submit your application online. We strongly recommend that you submit your application by 25 October 2024 .
29 November 2024	Exceptional social/medical application deadline: you must submit your application and supporting documentation by this date for it to be considered alongside all on-time applications.
3 March 2025	Offer day: you will receive your result by email in the evening of 3 March 2025 . Your child will receive an offer of a place at one school (single offer).
17 March 2025	Acceptance deadline: you must accept (or decline) your school place by this date. You can do this online.
24 March 2025	Second round of offers: declined offers are redistributed to other applicants on the waiting list in strict criteria order. Many applicants will be offered one of their higher preferences. The redistribution of declined offers continues until September.
4 April 2025	Appeal deadline: submit your online appeal for an Islington community school by this date. For other types of schools, please refer to the school's website. Remember, you can still appeal even if you have accepted a place at a different school.
July 2025	Waiting lists for schools outside Islington: Please check whether you need to submit an in-year application to remain on the waiting list of a school outside Islington.
31 December 2025	Islington school waiting lists: Your child's name will automatically be removed from all waiting lists. To add your child to a waiting list, you will need to submit an in-year application .

Top tips before you apply



Do

1. Apply on time – only 40% of applicants who applied late were offered one of their preferred schools compared to 97% of on-time applicants.
2. If your child's older **sibling** attends your preferred school, **you must still apply**. *Please note that to qualify for admission under the 'sibling' criterion, the older child will still need to be on roll at the school in September.*
3. Check the school website – there is a wealth of useful information available.
4. Visit schools – this is the best way to get a 'feel' for the school. You can meet a member of the leadership team, ask questions and see the school in action.
5. Think about what is right for your child – don't rely on what others tell you, visit the school and experience it first-hand.
6. Talk to your child – involve them as much as you can.
7. Think about the journey – how easy will it be to get to the school? A local school means your child can walk or cycle from home, benefitting their health and the environment.
8. Check the admission criteria and cut-off distance – how likely is it that your child will be offered a place? You can check by clicking on the link in the school fact file.
9. **Use all six preferences** – make sure you include at least one local school. Going to a local school may make it easier for your child to take part in after-school activities.
10. Ask the School Admissions team for advice – they can't tell you which schools to apply for, but they can explain the admission criteria and check whether you would have got a place the previous year.
11. Make sure you press '**submit**' when you finish your online application. You should then receive a reference number confirming safe receipt.



Don't

1. List private schools on your application – you should apply directly to fee-paying schools.
2. Wait till the last minute to apply – you may have a problem getting online or logging on. Give yourself plenty of time to think things through carefully.
3. List only one school – your application will not be treated more favourably, and you could lose out on another school you like.

Section 2: How to apply



Apply online

If you live in Islington, you need to apply using [Islington's online application form](#).

When can I apply?

You can apply from **1 September 2024** until **31 October 2024**. Applications made by the deadline are 'on-time' and will be processed before 'late' applications made after this deadline.

We strongly recommend that you submit your application by **Friday 25 October 2024** (the week before half term) in case there are any issues with submitting your application (e.g., problems with internet access, forgotten username or password etc.).

Why apply online?

1. You can do your application in stages. You can review the order of schools listed, and other information as many times as you want before you submit your online application.
2. The online system checks for errors or missing information.
3. The system is secure, and your information is safe.
4. A reference number is sent to your registered email confirming safe receipt of your application.
5. There is no need to pay for postage.

How do I get started?

You will need an email address. You can register for a free email account with several providers. For instructions about how to create an email address, watch this handy [YouTube](#) tutorial.

I have an email address, what next?

Register your email address on the [London e-Admissions portal](#). Once you have done this, you will receive an email explaining how to make your application.

When do I find out which school has been offered?

National Secondary Offer Day is **3 March 2025**. In the evening:

- you will receive an email telling you which school has been offered.
OR
- you can log on to the London e-Admissions system to view your offer online.

Who can help me with the online application?

The School Admissions team can offer telephone advice and talk you through the online application.

The team can also offer one to one support from 222 Upper Street. Please call **020 7527 5515** to arrange an appointment.

For technical queries and assistance, please contact the London e-Admissions helpdesk:

E: www.eadmissions.org.uk/support/

T: 020 8255 5555 (Option 1)

ParentComms

Why not sign up for ParentComms? Using the app, you will be able to receive the outcome of your application on your mobile device. You can download the free ParentComms app from the [Apple AppStore](#), [Google Play](#) or [Windows Phone Store](#) by registering your username and password. You will receive reminders about the closing date and any pending applications that need to be submitted by the deadline.

Make a note!



Please make a note of the following details as you will need this information to access your application and offer in March:

Application Reference Number: _____

Username: _____

Password: _____

**Don't forget –
apply online by 31
October 2024**

About school applications

What you need to know

1. How do I apply?

You must apply using the online application form of the local authority where your child lives. Apply at: [London E-admissions application form](#).

2. Do I need to apply if my child's older sibling already attends my preferred school?

Yes, you **must** apply even if your child's older sibling attends your preferred school. Please note that to qualify for admission under the 'sibling' criterion, the older child will still need to be at the school when your younger child is due to start Year 7 in September. **If you don't apply, your child may be left without a school place.**

3. How many schools can I pick?

You can list up to **six schools**. These schools can be in Islington or in another local authority. Please note that although you can list up to six school preferences, you will receive only **one** offer.

4. Have I got more chance of getting the school I want if I only list that school?

There is no advantage in listing only one or two schools. In fact, we highly recommend that you pick six schools, and include a local school.

5. Is my first preference given higher priority?

Each of your schools is considered separately, without the preference position being taken into account. This process is known as the '[Equal Preference](#)' system.

This means that first and sixth preferences are processed in the same way.

Your child will **not** get higher admission priority if you list a school as a first preference, and your preference order is **never** disclosed to schools.

6. So, why ask me to list schools in the order I prefer?

Preference order only comes into play **if** your child qualifies for admission to more than one of your preferred schools.

For example, if your child lives within the '[cut-off](#)' distance for two or more schools, the application system (**PLR**) automatically offers the highest preference possible.

So, if your child is eligible for a place at both your first and fifth preference schools, the system will select the highest preference possible, which in this case is your first preference school. This is why you should list schools in the order you most prefer, with your favourite school first.

7. So why not offer my child more than one school if this happens?

Only **one** offer can be made to each child. This is to make sure that every child receives an offer of a school place on Offer Day. It would not be fair for some children to receive two or three offers while others get none.

8. What happens to my other preferences?

All lower preferences are put back into the system so they can be offered out to other children.

So, if your child receives an offer at your third preference school, lower preferences are put back into the system, and your child is automatically placed on the waiting lists for all higher preference schools.

This means that if a place becomes available at your first preference school, we will contact you to make that offer.

9. How do you decide who gets a place at which school?

Every school must say how places will be allocated if they receive more applications than there are places available. This is done by applying rules – referred to as [admission criteria](#) or **oversubscription criteria**.

10. How do I know what the admission criteria are?

Every school **must** publish this information on their website. It is really important that you read and understand the [admission criteria](#) so you can make informed decisions about which schools to apply for.

All schools use distance as a way of prioritising applicants. However, other applicants are given higher priority – e.g., some schools prioritise siblings or children of a particular faith.

If you need help with understanding the [admission criteria](#), the School Admissions team can help.

11. Can I get advice on which schools I should choose?

We cannot give advice on which schools to pick as this is a personal matter, but we do advise you to:

- Visit the schools you are interested in so you can meet the staff, ask questions and, get a 'feel' for the school.
- List at least one of your nearest schools. Although there is no guarantee of a place at a local school, it is true to say that your child is more likely to get a place there as the majority of applicants are admitted under '[distance criterion](#)', which gives priority to children living closest to the school.

12. What happens if it is not possible to offer a place at one of my preferred schools?

We will reserve a place at your child's nearest Islington school with a vacancy and provide you with a list of all schools in the borough that still have places. You can accept the school offered or choose an alternative.

Your child will also remain on the waiting lists of all your preferred schools and if a place becomes available, we will contact you to make the offer. We will also make a second round of offers a few weeks after the acceptance/decline deadline so you may get a preferred school after all. **Don't risk being left without a school place.**

13. Can I list private schools on the form?

No. You need to apply for a place directly with fee-paying schools using their application form.

14. What about faith schools?

Yes, you can list these on the application form but you should check whether you need to complete a [Supplementary Information Form \(SIF\)](#). For Islington faith schools, you can check this in the school's fact file in section four of this brochure.

15. When do I need to make a final decision?

You must submit your online application by **31 October 2024** for it to be on-time. By applying online, you can change the order of your preferences right up until the deadline. Remember to press '**submit**' when you have made your final decision. Make sure you apply by midnight on **31 October 2024**. If your application is late the chances of getting a place at one of your preferred schools is likely to be reduced.

16. I am finding this stressful. Who can help me?

We understand that this is a difficult time for you, with lots of different things to consider. The School Admissions team is on hand to help. Do contact us and we will do our very best to assist you.

T. 020 7527 5515 E. admissions@islington.gov.uk

Application address

The address that we will use to process your application will be your child's permanent address on **31 October 2024**. We can only use one address. This must be the official address where your child spends most of their time Monday to Friday. We are unable to use a **future** or **intended** address for the purpose of school admissions.

Please note that we may not accept a temporary address if you still possess a property that was previously used as a home address; nor accept a temporary address if it is used solely or mainly to obtain a school place.

We may also carry out additional checks with the new school to see whether the child's home address has changed since the application was completed and will investigate all applications where:

- there are any doubts about the information originally provided
- information has been received from a member of the public to suggest misleading information has been provided and a fraudulent application made
- the council tax account is in a different name to the applicant.

The provision of false or misleading information will result in the school place being withdrawn and may lead to prosecution.

Whistleblowing

Islington Council takes a firm stand against any attempt to obtain a school place by fraud. If you provide false or deliberately misleading information whilst completing a school admissions application or use a temporary address intentionally for the purpose of gaining an advantage over other applicants, your application will become void.

If you know someone who intends to use, or has used, a false address to obtain a school place, you can report this confidentially to the Islington School Admissions team on 020 7527 5515 or email admissions@islington.gov.uk .

Shared parental responsibility

If parents live separately, but the child lives equally with both, then it is the parents' responsibility to make this clear at the time of the application and to provide supporting evidence in respect of both addresses, for example, a Residency Order from a court.

Please note that only one address can be used for school admission purposes and the final decision will rest with the Islington School Admissions team.

Proof of address

Please provide your **council tax reference number** (you can find this on your council tax bill) so we can verify your address. If you cannot provide this, please provide a copy of your most recent rent, mortgage statement or tenancy agreement.

If you cannot obtain these documents, please provide at least two alternative documents. For example: utility bill; bank statement; GP, hospital, dentist or optician letter.

We also require proof that the child you are applying for lives with you. Therefore, please provide a copy of your most recent child benefit or family tax credit letter which clearly states your child's name and address.

If you do not receive child benefit or family tax credit, please provide at least two alternative documents to prove your child lives with you. For example: a letter from your child's GP, dentist, hospital, optician; or the page within your child's health record book that has his/her name and address.

Please ensure that copies of documents provided are not older than 12 months. Documents can be uploaded with your online admissions application. If we require further information, we will contact you. **Don't delay submitting your application if you do not have the appropriate proofs of address as we can offer advice on what to do next.**

Change of address

If your child moves after **31 October 2024**, then please provide a copy of the documents listed above. This is to ensure your application is handled correctly.

Children of UK service personnel or crown servants

If you, or your partner, are a serving member of UK forces with a confirmed posting to Islington, or a crown servant returning from overseas, we will use the posting address provided by your employer if you can provide us with documentary supporting evidence of your relocation date and Islington address.

There is no guarantee that a place will be available at your preferred school; each application will be considered in line with the school's [admission criteria](#). If an offer can be made, then that place may be held for a reasonable period, depending on individual circumstances.

If we cannot offer your child a place at your preferred school, then we will in advance of your return, allocate the nearest Islington school to your home address that has a place available. Where your child is first on the waiting list, we will ask the school to go over number and admit your child as an 'excepted' pupil in line with provisions in the School Admissions Code.

Late applications

If we receive your application after **31 October 2024** then your application will be late. This means it will not be considered until we have allocated school places for all applications received on time. This could reduce your chances of getting a place at the school you want.

If there are exceptional reasons why it was not possible to make your application by the deadline, please email us at admissions@islington.gov.uk providing any supporting documentation.

Privacy Notice

London Borough of Islington will handle the information you have provided in line with the provisions of the General Data Protection Regulation (GDPR) 2018. Any personal information will be held in confidence with only the necessary people able to see or use it. [For more information about how we process personal data about you or your child, please refer to our Privacy Notice.](#)

Admission criteria for community schools

Children with an Education, Health and Care Plan (EHCP)

If your child has an EHCP, they will be admitted to the school named in the EHCP. Please contact your SEND Keyworker for further information.

Oversubscription criteria

When more applications are received than there are places available, the following criteria will be used to decide which pupils are offered a place at an Islington community school in the order listed below:

1. [Children looked after/Previously looked after](#)

This refers to children who are in the care of a local authority and children who have been adopted (or made subject to a Child Arrangements order or Special Guardianship order) immediately after being looked after, including those who appear to have been in state care outside of England. **Please refer to the [Glossary](#) in Section 6 for full details.**

2. [Siblings](#)

A sibling is defined as a brother or sister, half-brother or sister, stepbrother or sister or adopted brother or sister, whose main residence is at the same address. This criterion will apply to applicants with a sibling living at the same address who is on the roll of the preferred school (Years 7-11), or co-located Special School, at the time of the proposed admission in the new academic year.

3. **Exceptional social/medical needs**

The Director of Children's Services, on an individual basis, may give priority to applicants who can demonstrate that admission to a particular school is necessary on the grounds of professionally supported **exceptional** medical, social or special educational needs. Parents must supply details of any such special factors at the time of the original application (together with recent supporting documentation), to enable these factors to be considered.

If your child has an exceptional social (for example child protection/safeguarding issues) or medical need (for example if your child requires wheelchair access) to attend a specific Islington community school, then please provide professional evidence (e.g. from a doctor or educational psychologist) and complete our [social/medical application form](#) explaining why this is the only school that can meet your child's needs. Please return the form by **29 November 2024**.

Your case will be considered by a panel comprising senior admissions officers and SEND specialists. The panel will consider the evidence presented and consult relevant professionals as necessary to determine:

- a. whether your child has an exceptional social or medical need and
- b. whether this need can only be met at a specific school.

Please note late applicants applying under social/medical criterion can be prioritised only on the waiting list.

4. Distance

Applicants will be prioritised by distance (starting with the nearest). Nearness to schools is measured on a computerised mapping system using a straight-line distance measurement. Routes will be calculated from the home address (as defined by the Land and Property Gazetteer) to the midpoint of the school grounds (as determined by the London Borough of Islington).

Tie breaker

Distance will be used as a tiebreaker for criteria 1, 2 and 3. If only one place is available and two or more children live an equal distance from the school, the child who will be offered the place will be determined by random allocation using a computerised system.

How we calculate home to school distances

We use the Capita ONE system to calculate the distance from your child's home (the start point) to the school (the end point). This system calculates the distance in miles to three decimal places. The routing database system uses two dimensional maps. This means it does not take into account any contours or terrains.

The start point (applicant's home)

For calculation purposes, Islington Council uses the National Land and Property Gazetteer (NLPG) database to determine the start point for Islington addresses. The starting points for other addresses are provided by your home local authority. Calculations are based on the assumption that the child's home address is classified at the point of application as a residential property.

If you live in a block of flats where you use a communal entrance, we will use the NLPG point for the block and not the centroid of your individual flat for the distance calculation.

The end point (school)

The centre of the school grounds is used as the end point for home to school distance as defined by Islington Council.

Please note that you cannot compare distances produced on Islington's Capita ONE system to those calculated using any personal or online geographical information system software you may have access to such as satellite navigations systems or Google maps.

Islington residents can obtain an approximate distance measurement to any Islington school using the following link: [calculate your home to school distance](#).

Alternatively, you can call the School Admissions team for an approximate measurement on 020 7527 5515.

Cut-off distance

This is the distance of the last pupil admitted to the school under the 'distance' criterion. 'Cut-off' distances vary from year to year and are only given as a guide to help you assess the likelihood of being offered a place under the distance criterion.

For schools with a religious character (e.g., Catholic or Church of England schools) that use 'church' or 'faith' as one of their admission criteria, the 'cut-off distance' **only** applies to applicants considered under the final criterion of '**distance**' alone. It does not apply to other applicants considered under criteria with a higher priority (e.g., religious criteria related to faith or church).

Please note that living within the previous year's cut-off distance doesn't guarantee your child a place at the school.

Use the following link to find information on 'cut-off' distances for Islington schools www.islington.gov.uk/cut-offdistance.

Multiple Birth Siblings

If only one place is available at the school and the next child who qualifies for a place is one of multiple birth siblings or has a sibling who is eligible for admission in the same year group, we will ask community schools to admit all siblings to support the family.

Criteria flowchart

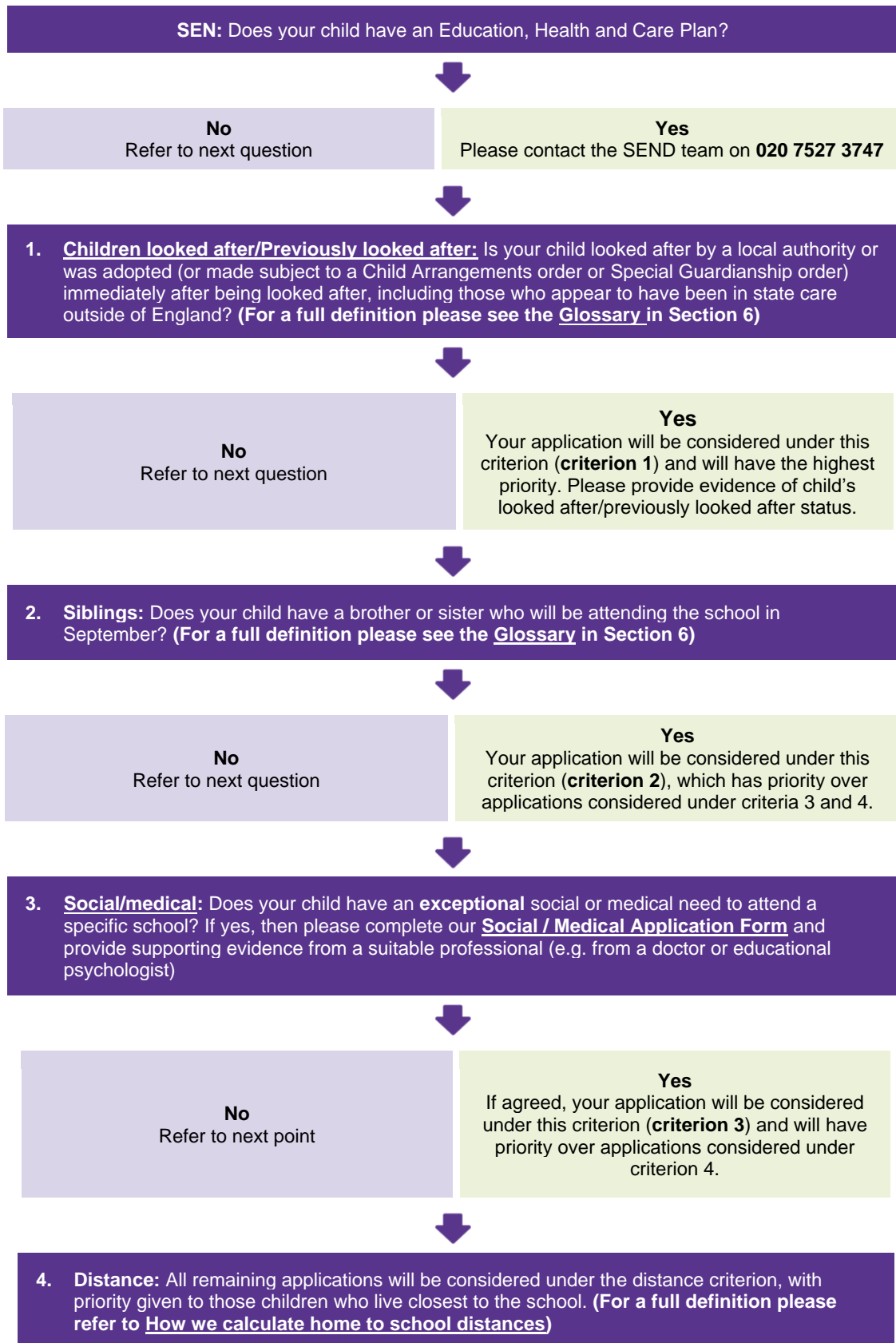


Table of school places

The table below provides a summary of information for Islington secondary schools for last year's admission round (admission in September 2024).

A. Name of school	B. Published Admission Number (PAN)	C. School Type	D. Applications received	E. First preference applications received	F. Total offers made	G. EHCP offers made via SEN process	H. LAC/PLAC criterion offers	I. Sibling criterion offers	J. Social medical criterion offers	K. Other criteria offers	L. Distance criterion offers	M. Alternative offers *	N. Cut off Distance (miles)	O. Appeals lodged	P. Appeals upheld
Arts & Media School, Islington	150	Mixed Foundation	327	72	124	6	1	24	0	N/A	70	23	N/A	0	0
Beacon High	120	Mixed Community	232	60	112	4	0	18	0	N/A	55	35	N/A	0	0
Central Foundation Boys' School	180	Boys Voluntary-Aided	523	191	180	3	1	38	N/A	N/A	138	0	Band 1: 1.429 Band 2: 1.677 Band 3: 1.658 Band 4: 3.911	4 1 0 0	0 0 0 0
City of London Academy, Highbury Grove	210	Mixed Academy	570	123	191	3	3	30	0	N/A	154	1	N/A	0	0
City of London Academy, Highgate Hill	140	Mixed Academy	214	58	83	4	0	27	0	Children of staff: 0	52	0	Band 1: N/A Band 2: N/A Band 3: N/A Band 4: N/A	0 0 0 0	0 0 0 0
City of London Academy, Islington	165	Mixed Academy	544	136	165	3	0	32	1	City of London resident: 0 Attending Richard Cloudesley : 0	129	0	Band 1: 2.946 Band 2: 1.111 Band 3: 2.016 Band 4: 1.541	0 1 2 1	0 1 0 1
Elizabeth Garrett Anderson School	180	Girls Community	464	179	180	2	2	27	0	N/A	149	0	1.082	9	2
Highbury Fields School	140	Girls Community	455	125	140	0	1	17	0	N/A	122	0	0.974	2	0

Section 2: How to apply

A. Name of school	B. Published Admission Number (PAN)	C. School Type	D. Applications received	E. First preference applications received	F. Total offers made	G. EHCP offers made via SEN process	H. LAC/PLAC criterion offers	I. Sibling criterion offers	J. Social medical criterion offers	K. Other criteria offers	L. Distance criterion offers	M. Alternative offers *	N. Cut off Distance (miles)	O. Appeals lodged	P. Appeals upheld
St Aloysius' College	180	Boys Voluntary-Aided Catholic	203	40	65	4	0	5	0	Faith: 32 Music: 2 Future Zone: 14	8	0	Band 1: N/A Band 2: N/A Band 3: N/A Band 4: N/A	0 0 0 0	0 0 0 0
St Mary Magdalene Academy	210	Mixed Church of England Academy	1106	454	210	9	4	62	N/A	Primary: 19 Language: 21 Children of Staff: 4 Crown Servant: 1	Open: 63 Foundation: 27	63 27	Open: 0.38 Foundation: 1.091	30 1	0 0

Notes

*M: Applicants who did not receive an offer at one of their stated preferences were reserved a place at their nearest Islington community school with a vacancy in line with the Council's published admissions policy.

Section 3: What happens next?



What happens to your application?

All London boroughs and some councils bordering London are part of the pan-London school admissions scheme. This makes applying for school places in the capital fairer and simpler.

How does it work?

A secure computer system is used to exchange information between councils when residents apply for schools outside the borough where they live.

Equal Preference

Every school you apply for is considered at the same time and your order of preference is kept confidential.

If your application meets the criteria for more than one school, you will be offered the highest preference possible, and all lower preferences will be withdrawn and released to other children. So, make sure you put the school you really want first.

Each school has a set number of available places – check the school's fact file for details.

Admission Criteria

Where a school receives more applications than there are places available (i.e., it is oversubscribed) the school's published [admission criteria](#) will be used to decide which pupils will be offered the places – the school's fact file provides a link to the admission criteria. A summary of last year's results is provided in the [Table of school places](#).

Offer Day

You will be informed of the outcome of your application on National Offer Day, **3 March 2025**. You can log onto eAdmissions from 5pm to find out the outcome of your application. You will also receive an email informing you of your result.

Please accept the place online by **17 March 2025**.

If you are an Islington resident and we cannot offer your child a place at any school listed on your application, we will reserve a place at your nearest Islington school with an available place.

We will also inform you of where there are other vacancies to enable you to apply for alternative schools.

Second round of offers

A second round of offers will be made on **24 March 2025** following completion of the acceptance and decline process. Any places declined from the first round of offers on national Offer Day are put back into the system for redistribution to other applicants. These offers are made in line with each school's published admission criteria.

The positive news is that by September many applicants are offered a higher preference school.

Waiting lists and appeals

Waiting lists

Your child's name will automatically be placed on the waiting list of any school listed as a higher preference on your original application than the school place offered.

Islington schools: Your child will remain on the waiting list of any Islington school until **31 December 2025**. After this date, **your child's name will be removed from all waiting lists**. To add your child to a waiting list, you will need to complete a fresh application form using Islington's online [In-year School Admissions Application](#).

Schools outside Islington: Please check whether you need to submit an in-year application to remain on the waiting list of a school outside Islington. In some local authorities children are removed from waiting lists in July, and you may need to submit an in-year application form in order for your child to remain on school waiting lists. For further information, please contact the local authority where the school is located.

Please note:

- being on a waiting list will not guarantee a place at your preferred school
- your child's waiting list position can go **down** as well as up
- waiting list positions are considered strictly in accordance with the school's published admission criteria and are not affected by acceptance of a lower preference offer.

You can accept the place offered, remain on the waiting list of any higher preference school and lodge an appeal all at the same time.

Right of appeal

You have the right of appeal under the School Standards & Framework Act 1998 against the refusal of a place at any of the schools listed on your application.

An independent panel will hear your appeal and their decision is binding for both the Admission Authority and the school(s). The panel will be made up of people who have experience in education and lay members (people without personal experience of school management or the provision of education).

How do I lodge an admission appeal?

For Islington community schools, use this link to [appeal a school decision](#) by **4 April 2025**.

For other schools, contact the school directly to obtain an appeal form. The completed form should be returned to the school by the date given to you.

When will the appeal take place?

Provided you lodge your appeal for an Islington community school by the deadline above, your appeal will be heard in **May or June 2025**.

What does the appeal panel consider?

The appeal panel can only uphold an appeal (i.e., offer a school place) where:

1. The admission arrangements do not comply with legal requirements set out in the [School Admissions Code](#) and the [School Standards and Framework Act \(SSFA\) 1998](#)
2. The admission arrangements were not correctly or impartially applied
3. The decision to refuse admission was unreasonable given the circumstances of the case.

The panel must then decide whether the admission of additional children would **prejudice the provision of efficient education or the efficient use of resources**.

Appeal a school decision

University Technical Colleges and Studio Schools

You can apply for a place at either a University Technical College (UTC) or a Studio School if your child is born between 1 September 2010 and 31 August 2011.

As your child progresses through their secondary education, you may feel they would benefit from a more vocational curriculum offer focused on technical subjects.

[University Technical Colleges \(UTCs\)](#) are set up by universities and businesses and specialise in one or two technical subjects. In years 10 and 11 they offer a similar GCSE curriculum to a typical secondary school, including English and Maths, as well as their specialist subject.

[Studio Schools](#) are similar to UTCs in that they have employer involvement in the curriculum and focus on developing skills needed for employment, involving personal coaching and work experience. They have a similar curriculum to a typical secondary school.

If you would like to apply for a UTC or Studio School, then you will need to complete an [online application with your home local authority](#).

You must apply when your child is in Year 9 and submit your application by **31 October 2024**. If you apply after this date, your chance of getting a place at your preferred school may be reduced. You will be notified of the result of your application in the evening of **3 March 2025**.

If your child receives an offer of a place at a UTC or Studio School, they will join the new school at the start of Year 10 in **September 2025**. **Your child must therefore continue to attend their current school for the remainder of Year 9**. Please let the school know that your child will be moving on in Year 10 and provide details of the new school.

For more information, please contact the School Admissions team on 020 7527 5515.

Applying during the school year

If you are an Islington resident applying for a secondary school place, and your child is not due to start Year 7 in September 2025, use our [In-Year School Admissions Application Form](#).

You can apply for up to **three** schools at a time. If you live in another borough, you can also apply for an Islington school using our online form.

Waiting lists

Please note that waiting lists are cleansed each term. To remain on a school's waiting list, you will need to complete a fresh application form using Islington's online [In-year School Admissions Application](#).

Fair Access Protocol

All local authorities are required to have a '**Fair Access Protocol**' to ensure that **unplaced and vulnerable children, and those who are having difficulty in securing a school place in-year**, are found suitable education provision as quickly as possible. If there are no vacancies in any Islington schools, we may ask schools to go over their published admission number.

The following children who are unplaced, vulnerable or are experiencing difficulty in securing a school place in-year **may** be eligible for admission under **Islington's Fair Access Protocol**:

- a) Children subject to a Child in Need Plan or a Child Protection Plan within the last 12 months
- b) Children living in a refuge or in other Relevant Accommodation
- c) Children from the criminal justice system
- d) Children who have been permanently excluded or those deemed suitable for reintegration to mainstream education from pupil referral units
- e) Children with special educational needs (but without an Education, Health and Care plan), disabilities or medical conditions
- f) Children who are carers
- g) Children who are homeless
- h) Children in formal kinship care arrangements
- i) Children of Gypsies, Roma, Travellers, refugees, and asylum seekers
- j) Children who have been refused a place due to their challenging behaviour
- k) Children for whom a place has not been sought due to exceptional circumstances
- l) Children who have been out of education for four or more weeks
- m) Previously looked after children for whom the local authority has been unable to secure a school place promptly.

Applications for school places under [Islington's Fair Access Protocol](#) are considered by a multi-agency panel which decides whether pupils should be admitted under the protocol, and which schools should be allocated. Schools are allocated on a 'fair share' basis to ensure no individual school takes a disproportionate number of children under the protocol. Therefore, parental preference may not always be met. For further information, please contact the School Admissions team on **020 7527 5515** or refer to [Islington's Fair Access Protocol](#).

Section 4: Islington's Schools and Sixth Forms



Arts and Media School, Islington

Fact file

Head Teacher: Susan Service

Address: Turle Road, London N4 3LS

[Arts and Media School, Islington map](#)

Bus routes: W3, 91, 210 or any bus to Finsbury Park station then a ten-minute walk

Nearest station: Finsbury Park



Type of School:	Mixed Foundation
Age range:	11-16
Specialism:	Creative Arts and Media
Total number of places available at the school (Y7-11):	720
Number of places available in Year 7:	120
School start and finish times:	8.40am – 3.00pm
Accessibility:	Fully accessible including lifts
Post 16 provision:	City and Islington College
DfE Code:	206/4325
Arts and Media School, Islington admissions criteria	
Last pupil admitted under the distance criterion last year:	N/A
Calculate your home to school distance	
Website:	www.artsandmedia.islington.sch.uk
Contact name for admission enquiries:	Joleen Davis
Email:	j.davis@amsi.school
Tel:	020 7281 5511
X(Twitter):	@AMSI_school
Open mornings:	Thursdays 9.15am-11.00am: 26 September 2024 3, and 10 October 2024
Open evening:	19 September 2024, 5.00pm-7.00pm

Beacon High

Fact file

Head Teacher: Alan Streeter

Address: Hilldrop Road, London N7 0JG

[Beacon High map](#)

Bus routes: 29, 253, 259, 279, 390, 393

Nearest station: Finsbury Park, Caledonian Road, Tufnell Park, Kentish Town (Tube), Kentish Town or Camden Town (Overground)



Type of School:	Mixed Community
Age range:	11-16
Specialism:	Specialist Sports College
Total number of places available at the school (Y7-11):	600
Number of places available in Year 7:	120
School start and finish times:	8.40am-3.15pm
Accessibility:	Wheelchair access, lift, accessible toilets
Post 16 provision:	City and Islington College
DfE Code:	206/4112
Beacon High admissions criteria	
Last pupil admitted under the distance criterion last year:	N/A
Calculate your home to school distance	
Website:	www.beaconhigh.org
Contact name for admission enquiries:	Pauline Tobierre
Email:	postbox@beaconhigh.org
Tel:	020 7607 5885:
X(Twitter):	@Beacon_High
Open mornings:	9.00am-10.00 am: 10, 18, 26 September 2024 4, 7, 15, 23 October 2024
Open evening:	17 September 2024, 5.00pm-7.00pm

Central Foundation Boys' School

Fact file

Head Teacher: Jamie Brownhill

Address: Cowper Street, London EC2A 4SH

[Central Foundation Boys' School map](#)

Bus routes: 21, 43, 55, 76, 135, 141, 205, 214, 243, 271

Nearest station: Old Street, Liverpool Street, Moorgate



Type of School:	Boys Voluntary-aided
Age range:	11-18
Total number of places available at the school (Y7-11):	900
Number of places available in Year 7:	180
School start and finish times:	8.50am-3.20pm
Accessibility:	Lift and wheelchair access (partial); accessible toilets
Post 16 provision:	CFBS Sixth Form
DfE Code:	206/4614
Central Foundation Boys' School admission criteria	
Last pupil admitted under the distance criterion last year:	Band 1: 1.429 miles Band 2: 1.677 miles Band 3: 1.658 miles Band 4: 3.911 miles
Calculate your home to school distance	
Website:	www.centralfoundationboys.co.uk
Contact name for admission enquiries:	Ms Khan
Email:	admissions@cfbs.islington.sch.uk
Tel:	020 7253 3741
Open mornings:	9.30-10.30am: 1, 2, 8 and 9 October 2024
Open evening:	26 September 2024: First tour 5.00-6.00pm Second tour 6.10-7.10pm
Banding tests:	Please see school website for further information

City of London Academy, Highbury Grove

Fact file

Principal: Aimee Lyall

Address: 8 Highbury Grove, London N5 2EQ

[City of London Academy, Highbury Grove map](#)

Bus routes: 4, 19, 30, 43, 236, 271, 277, 393

Nearest station: Highbury & Islington, Canonbury



Type of School:	Mixed Academy
Age range:	11-18
Specialism:	Specialist Music School
Total number of places available at the school (Y7-11):	1110
Number of places available in Year 7:	180
School start and finish times:	8.40am-3.10pm
Accessibility:	Fully accessible building
Post 16 provision:	City of London Academy, Highbury Grove
DfE Code:	206/4003
City of London Academy, Highbury Grove admission criteria	
Last pupil admitted under the distance criterion last year:	N/A
Calculate your home to school distance	
Website:	www.highburygrove.cola.org.uk
Contact name for admission enquiries:	Rachael Simmons
Email:	rsimmons@highburygrove.cola.org.uk
Tel:	020 7288 8900
Open mornings:	Wednesdays 9.00am-10.00am: 2 October 2024 9 October 2024 16 October 2024
Open evening:	25 September 2024, 5.00-7.00pm
Instagram:	@colahighburygrove

City of London Academy, Highgate Hill

Fact file

Principal: Prince Genuh

Address: Holland Walk, London N19 3EU

[City of London Academy, Highgate Hill map](#)

Bus routes: 4, 10, 41, 43, 91, 134, 135, 143, 149, 210, 263, 271, C11, C12

Nearest station: Archway (Tube) or Upper Holloway (Overground)



Type of School:	Mixed Academy
Age range:	11-18
Total number of places available at the school (Y7-11):	700
Number of places available in Year 7:	140
School start and finish times:	8.25am-2.45pm (Mon, Thurs, Fri) 8.25am-3.40pm (Tues and Weds)
Accessibility:	Fully accessible buildings
Post 16 provision:	Highgate Hill Collegiate Sixth Form
DfE Code:	206/4001
City of London Academy, Highgate Hill admission criteria	
Last pupil admitted under the distance criterion last year:	Band 1: N/A Band 2: N/A Band 3: N/A Band 4: N/A
Calculate your home to school distance	
Website:	www.highgatehill.cola.org.uk
Contact name for admission enquiries:	Tara Habbershaw
Email:	t.habbershaw@highgatehill.cola.org.uk
Tel:	020 7281 3536
X(Twitter):	@COLA_Highgate
Open mornings:	9.00am-10.00am: 19, 20, 23, 24, 25, 26, 27 September 2024
Open evening:	18 September 2024, 4.30pm-7.00pm
Banding tests:	Saturdays, 9.00am-1.00pm: 21, 28 September 2024 5, 12 October 2024

City of London Academy, Islington

Fact file

Principal: Laurie Glees

Address: Prebend Street, London N1 8PQ

[City of London Academy, Islington map](#)

Bus routes: 4, 19, 30, 43, 56, 73, 76, 141, 271

Nearest station: Angel, Essex Road or Highbury and Islington



Type of School:	Mixed Academy
Age range:	11-18
Total number of places available at the school (Y7-11):	800
Number of places available in Year 7:	140
School start and finish times:	8.40am-3.10pm
Accessibility:	Wheelchair access, lift, accessible toilets
Post 16 provision:	COLAI-6
DfE Code:	206/6906
City of London Academy, Islington admission criteria	
Last pupil admitted under the distance criterion last year:	Band 1: 2.946 miles Band 2: 1.111 miles Band 3: 2.016 miles Band 4: 1.541 miles
Calculate your home to school distance	
Website:	www.colai.org.uk
Contact name for admission enquiries:	Tsungayi Mhizha
Email:	info@cityacademyislington.org.uk
Tel:	020 7226 8611
Open mornings:	Thursdays 9.00am-10.15am: 26 September 2024 3, 10 October 2024
Open evening:	Tuesday 24 September 2024, 4.30pm-7.30pm
Banding tests:	Saturdays: 12 October and 16 November 2024 (by appointment only)

Elizabeth Garrett Anderson School

Fact file

Head Teacher: Sarah Beagley

Address: Donegal Street, London N1 9QG

[Elizabeth Garrett Anderson School map](#)

Bus routes: 4, 19, 30, 38, 43, 56, 73, 153, 214, 341, 394, 476

Nearest station: Angel



Type of School:	Girls Community
Age range:	11-16
Total number of places available at the school (Y7-11):	900
Number of places available in Year 7:	180
School start and finish times:	8.40am-3.00pm Years 7 to 10 8.40am-3.50pm Year 11
Accessibility:	Fully accessible
Post 16 provision:	City and Islington College St Mary Magdalene Sixth Form
DfE Code:	206/4324
Elizabeth Garrett Anderson School admissions criteria	
Last pupil admitted under the distance criterion last year:	1.082 miles
Calculate your home to school distance	
Website:	www.egaschool.co.uk
Contact name for admission enquiries:	Dominique Plumley
Email:	admissions@egas.islington.sch.uk
Tel:	020 7837 0739
X(Twitter):	@EGA_School
Open mornings:	9.15am-10.30am: Tuesday 17 and 24, September 2024 Tuesday 1 October 2024 Thursday 3 October 2024
Open evening:	Thursday 26 September 2024, 5.00pm-7.30pm

Highbury Fields School

Fact file

Head Teacher: Tim Fox

Address: Highbury Hill, London, N5 1AR

[Highbury Fields School map](#)

Bus routes: 4, 19, 30, 43, 43x, 236, 263, 277, 279,

Nearest station: Drayton Park, Arsenal,
Highbury and Islington



Type of School:	Girls Community
Age range:	11-18
Specialism:	Science
Total number of places available at the school (Y7-11):	700
Number of places available in Year 7:	140
School start and finish times:	8.50am-3.15pm
Accessibility:	Lift and wheelchair access (partial) Accessible toilets
Post 16 provision:	Highbury Fields Sixth Form
DfE Code:	206/4307
Highbury Fields School admissions criteria	
Last pupil admitted under the distance criterion last year:	0.974 miles
Calculate your home to school distance	
Website:	www.highburyfields.islington.sch.uk
Contact name for admission enquiries:	Leigh O'Hara
Email:	office@highburyfields.islington.sch.uk
Tel:	020 7288 1888
Open Mornings:	24, 25, 26 September 2024 1 and 2 October 2024 Please check website for further details or changes
Open Evening:	3 October 2024, 5.00pm-7.00pm

St Aloysius' College

Fact file

Head Teacher: Paula Whyte

Address: Hornsey Lane, Highgate N6 5LY

[St Aloysius' College map](#)

Bus routes: C11, W5, 10, 43, 91, 134, 143, 210, 263, 271

Nearest station: Archway (Tube) or Upper Holloway (Overground)



Type of School:	Catholic Boys school with a mixed Sixth Form		
Age range:	11-19		
Specialism:	Maths and Computing		
Total number of places available at the school (Y7-11):	870		
Number of places available in Year 7:	150		
School start and finish times:	8.30am-3.05pm		
Accessibility:	Fully accessible building		
Post 16 provision:	Sixth Form at St Aloysius' College		
DfE Code:	206/4651		
St Aloysius' College admission criteria			
St Aloysius' College Supplementary Information Form (SIF)			
Last pupil admitted under distance criterion last year:	Band 1: N/A	Band 2: N/A	Band 3: N/A
		Band 4: N/A	
Calculate your home to school distance			
Website:	www.sta.islington.sch.uk		
Contact name for admission enquiries:	André Charlemagne		
Email:	enquiries@sta.islington.sch.uk		
Tel:	020 7561 7800		
X(Twitter):	@staloyusisc		
Open mornings:	9.15am-10.15am: 2, 3, 4, 7, 8, 9, 10 and 11 October 2024		
Open evening:	1 October 2024, 4.30pm-7.30pm		
Open Saturday	5 October 2024, 9.00am-12.00pm		
Banding tests:	Saturday 7 December 2024, 9.00am -11.00am		
Music Auditions:	Friday 18 October 2024, 9.30am-12.00pm		

St Mary Magdalene Academy

Fact file

Academy Head Teacher: Victoria Linsley

Head of Secondary: John Reardon

Address: Liverpool Road, London N7 8PG

[St Mary Magdalene Academy map](#)

Bus routes: 4, 19, 30, 38, 43, 153, 271

Nearest station: Highbury and Islington



Type of School:	Mixed Church of England Academy
Age range:	4 -19
Specialism:	Global Citizenship
Total number of places available at the school (Y7-11):	1020
Number of places available in Year 7:	180 (up to 30 places are reserved for pupils attending the primary phase of the Academy).
School start and finish times:	8.40am-3.20pm (Year group differences may apply)
Accessibility:	Fully accessible
Post 16 provision:	St Mary Magdalene Sixth Form
DfE Code:	206/6905
St Mary Magdalene Academy admission criteria	
Last pupil admitted under the distance criterion last year	Open: 0.380 miles Foundation: 1.091 miles
Calculate your home to school distance	
Website:	www.smmacademy.org
Contact name for admission enquiries:	Birte Rohloff
Email:	admissionsregistrar@smmacademy.org
Tel:	020 7697 0123
X(Twitter):	@StMM_Academy
Morning tours:	Ticket only – please book via the school's website First Tour 9.00am and Second tour at 9.15am September 2024: 10, 11, 12, 13, 17, 18, 19, 20, 24, 25, 27 October 2024: 1, 2
Aptitude tests:	Thursday 26 September 2024 (Time to be confirmed by letter to parents who have registered for the test)
Open evening:	Thursday 3 October 2024 5.00pm-7.00pm (no need to book)

Dame Alice Owen's School, Potters Bar

Fact file

Dame Alice Owen's School welcomes applications from Islington families and commits to allocating a minimum of 20 secondary transfer places to children that either live in or attend a school in Islington. If you would like to apply to Dame Alice Owen's School, please visit the school website or telephone the Admissions Office at the school for further information.

Head Teacher: Mrs Hannah Nemko

Address: Dugdale Hill Lane, Potters Bar, EN6 2DU

[Dame Alice Owen's School, Potters Bar map](#)

Nearest station: Potters Bar

Type of school: Mixed Academy

Age range: 11 – 18

Specialism: Languages, science



Total number of places available at the school:	1433
Number of places available in Year 7:	200 (A minimum of 20 places reserved for Islington residents)
School start and finish times:	8.45am-3.45pm
Accessibility:	Please refer to our website for further information
Post 16 provision:	Dame Alice Owen's Sixth Form
DfE Code:	919/5407
Dame Alice Owen's School, Potters Bar admission criteria	
Website:	www.damealiceowens.herts.sch.uk
Contact name for admission enquiries:	Debbie Coles
Email:	admissions@damealiceowens.herts.sch.uk
Tel:	01707 643441
X(Twitter):	@damealiceowens
Open afternoon:	18th July 2 pm - 4:45 pm
School tours:	7, 8 and 10 October - 9am - 10:30 am
Aptitude tests:	2 September 2024 – Verbal Reasoning and 1st round musical aptitude test w/c 23rd September 2nd round musical aptitude test 28th September - English and Maths tests

Section 5: Other Sixth Form options



City and Islington Sixth Form College

Fact file

City and Islington College has close to 30 years of long-standing history within London for delivering post-16 education; each of our centres is focused on running study programmes in particular subject areas and each has its own vibrant courses and qualifications with its own community of students, teachers, and support staff. Your child will participate in work-related learning and extracurricular activities, with English/maths support, where necessary, giving them an independent learning experience in a supportive environment.

Our students achieve excellent results and progress to higher education, an apprenticeship, or other paid employment.

Curriculum offer:

A Levels in over 35 different subjects; vocational courses (such as BTECs and other diplomas), Apprenticeships and T Levels

Address: The college has four centres in North London. Please refer to [City and Islington Sixth Form College Website](#) for more information.

Bus routes: 4, 17, 19, 29, 30, 38, 43, 56, 73, 91, 106, 153, 205, 210, 214, 236, 253, 254, 259, 271, 274, 279, 341, 393, 394, 476, W3, W7

Nearest station: Angel, Finsbury Park, Holloway Road

Admissions policy:

Applications open in October for the following year. A Level places are in high demand, and we encourage you to apply as soon as possible. Applications for all other courses are open all year round. Enrolment onto our courses takes place in August.

For more information:

Email: courseinfo@candi.ac.uk

Tel: 020 7700 9200

[City and Islington Sixth Form College website](#)

London Screen Academy (LSA)

Fact file

The London Screen Academy (LSA) is a free to attend state-funded sixth form academy for 16-19-year-olds, based in Islington, set up with the mission to diversify the screen industries. LSA was founded by six of the UK's biggest film and TV producers.

Students develop all the creative, technical, and academic skills required for a career in the film and TV industries. All students work towards a UAL Level 3 Extended Diploma which is **equivalent to 3 A-Levels**.

Students must also choose an additional qualification from the following options: **A-level Maths, A-level English Literature and Language or Extended Project Qualification (EPQ) or Core Maths**.

Curriculum offer:

All LSA students study the UAL Level 3 Extended Diploma; this qualification is equivalent to three A-Levels and provides students with a broad knowledge of the many skills and disciplines within the screen industries. Students also take on one Additional Qualification (AdQual) which develops their critical, reflective, problem-solving and independent learning skills. Visit LSA.ac.uk/course for a detailed overview of the two-year course.

Address: Ladbroke House, 62-66 Highbury Grove, Islington, London N5 2AG

[London Screen Academy \(LSA\) map](#)

Bus routes: 4, 19, 36, 263

Nearest stations: Highbury and Islington, Drayton Park, Canonbury, Holloway Road

[London Screen Academy \(LSA\) admissions policy](#)

For more information:

Email: enquiries@LSA.ac.uk

Tel: 020 8106 8100

[London Screen Academy \(LSA\) website](#)

Section 6: Useful information and contacts



Financial assistance

Free School Meals

As you begin to prepare for your child's move to secondary school in September, we would like to remind you about the benefit of Free School Meals. If you are eligible to claim for Free School Meals, we encourage you to apply. Applying for Free School Meals means that you save on lunch costs and at the same time raise additional funding for your child's school. There is no commitment for children to eat a school meal every day but for every child eligible the school will receive £1,050 of extra funding. This helps schools to provide valuable support such as extra tuition, learning assistants and after-school clubs.

Your child may be eligible if you receive any of the following benefits: Income Support, Income-based Jobseeker's Allowance, Income-based Employment and Support Allowance, Child Tax Credit if your taxable income is less than £16,190 and you do not receive Working Tax Credit, The Guarantee Element of State Pension Credit Support under Section VI of the Immigration and Asylum Act 1999.

Criteria have been extended to include Universal Credit. To qualify, your household income must be less than £7,400 a year after tax and not include any other benefits.

If you receive Working Tax Credit, you are not eligible to claim for Free School Meals unless you have stopped working in the last four weeks.

If your child is eligible for Free School Meals, they'll remain eligible until they finish their current phase of schooling (primary or secondary).

If you also have younger children don't forget that all pupils attending an Islington maintained nursery or primary school are eligible for Islington Universal Free School Meals.

School Uniform grant

The council offers £150 to eligible Islington parents to help meet the cost of school uniforms at secondary transfer and covers children transferring to an Islington or out-of-borough secondary school. The grant is available to Islington residents whose children are eligible for Free School Meals under the national criteria.

[Free School Meals and School Uniform Grant](#)

E. FreeSchoolMeal@islington.gov.uk

Islington year 12 bursary

Young people going into year 12 are eligible for a £300 bursary to help them start further education. The council is topping up the financial support offered through sixth form schools and colleges by the Education Funding Agency to students who might otherwise have to drop out of education due to lack of funds. To qualify, students must be an Islington resident, have received free school meals in year 11, have moved immediately into post-16 education and training without taking a break and be studying full time.

Additional educational needs

Our secondary schools welcome and provide for all children so, whatever your child's needs, they can fully participate in school life.

We believe that all our students are entitled to a rich and diverse curriculum that is tailored to meet each child's individual needs.

For Islington's high achieving students, our schools develop children's aptitudes, skills and attainment through a varied programme of advanced learning, competitions and challenges.

For those with special educational needs, schools encourage and support children to become confident learners and celebrate their achievements as valued members of the school community.

For children with English as an additional language, schools ensure that their language development needs are met with high quality language-rich classroom practice, effective induction systems and targeted interventions. This work is supported by trained specialist teachers, teaching assistants and bilingual parent support assistants who ensure these high achieving students can access the curriculum.

The best way to find out whether a particular school would suit your child is to visit the school and see for yourself.

Please see [Islington's Local SEND Offer](#) for more information or contact 020 3031 6651 / 6652 for independent SEND support and advice.

Attendance matters: every day counts!

Good attendance and punctuality provide the best chance for your child to achieve success. The evidence speaks for itself:

Exam results

In Islington, pupils with higher KS4 attainment in 2023 had lower levels of absence over the key stage (Year 10 and Year 11) compared to those with lower attainment in mainstream schools.

The Basics (English and Maths GCSEs)

- The average attendance of pupils who achieved grades 9 to 5 in English and Maths was **89%**
- The average attendance of pupils who achieved grades 9 to 4 in English and Maths was **87%**
- The average attendance of pupils who did not achieve grades 9 to 4 in either English or Maths (or both) was **82%**

EBacc

- The average attendance of pupils who achieved grades 9 to 5 in all components of the EBacc was **93%**
- The average attendance of pupils who achieved grades 9 to 4 in all components of the EBacc was **92%**
- The average attendance of pupils who did not achieve grades 9 to 4 in all components of the EBacc was **81%**

* GCSE grades range from 9-1, with 9 being the highest score.

**The EBacc (English Baccalaureate) comprises five components - English, maths, science, a language and history or geography.

Punctuality

Did you know that being 10 minutes late, every day adds up to 32 hours of lost learning a year? That's the equivalent of 6 days and 2 hours! **Every day really does count.**

A borough-wide approach

Islington's 'community of schools' is committed to securing good attendance and punctuality for your child. This means that term-time holidays will not be authorised (unless there are exceptional circumstances), and every absence will be followed up with you. Schools will work with you to improve your child's attendance, but ultimately the legal duty to secure regular school attendance sits with parents. In some cases, where attendance fails to improve, this may result in penalty notices (fines) or prosecution.

Getting to School

Islington has a great network of bus, tube and rail links making it easy to get to any of Islington's schools. Find out more on the [TfL website](#).

Sustainable travel

Islington Council is working with schools to promote safer, healthier and more environmentally friendly ways to travel. Our aims are to:

- make cycling and walking safer and more attractive
- increase the number of school pupils using local bus services
- reduce traffic congestion around schools
- develop partnerships with schools, their communities and other organisations
- promote the development of school travel plans
- promote safety through education and training
- promote the health benefits of walking and cycling
- promote sustainable travel choices by ensuring any new schools are accessible by walking, cycling and public transport
- raise awareness of School Streets

Cycling to school, work and for daily journeys is a fun, quick and cheap way to get around as well as being good for the environment and for physical and mental health.

Walking is a great way to keep fit, help the environment and have fun! Why not start or join **Islington School Streets**, a walking bus to your child's school? To find out more please see [Islington School Streets](#).

TfL Travel for Life

Islington Council supports active travel in schools through the creation of school travel plans using the TfL [Travel for Life](#) platform. By running Travel for Life activities, schools can gain DfT-recognised accreditation. A school travel plan will look at the journeys pupils make to get to and from school and why they make certain travel and transport choices. With this information we can work with schools to find practical solutions to encourage safe, healthy and environmentally friendly travel choices. For more information on school travel plans, please email schooltravelplans@islington.gov.uk.

Try Before You Bike

If you are thinking of starting cycling, you can try a bike from £10 per month for a child's bike or £20 for an adult bike. Just choose your new bike and accessories using the helpful online tools, the bike gets delivered to you and you will be given a free Cycle Skills session before you get started. With [Try Before You Bike](#), you pay the monthly fee until you have fully bought the bike or return it at any stage.

All About the Bike

The **All About the Bike** offer works with schools to engage Pupil Premium secondary school students with cycling and physical activity. The participants will be given a reconditioned cycle and a lock which is theirs to keep. They will get Bikeability Level 3 training and cycle maintenance training. Contact sian.eiles@islington.gov.uk.

Summerversity - Become a Confident Cyclist

Over the Summer holidays teenagers aged 13-19 can take part in a week's cycle training and fun led ride at Finsbury Park. Bikes are provided and there is no cost. Check out the [website](#) for more details.

Bikeability Level 3

The course begins by covering bike control skills at Level 1, before progressing to Level 2 training on quiet local roads and then Level 3 on busier roads. All are risk assessed by an instructor prior to use. The aim of the course is to give you confidence to make any journey by bike. This course is progressive, and you need to attend each day to complete the course. If you miss a day, you will not be able to take any further part in the course. Schools can [book](#) the course directly on our website.

Led ride

The Friday session will be a led ride around London, 10.30am-12.30pm.

Adult Cycle Skills

Parents, carers and school staff who work in Islington can get [free cycle skills](#) sessions to either learn to ride or become more confident on the roads. Bikes can be provided, and sessions arranged to a time that suits you.

Advice and support

There has never been a better time to choose an Islington secondary school. For children to achieve their best, we know they need to feel happy, safe and secure. That's why our schools are supported by an extensive range of providers all working together to support you with navigating your child's educational journey.

A rich and diverse programme of cultural events and creative activities are on offer in all schools and youth hubs across the borough. And for those moments in life when a little extra 'TLC' (Tender Loving Care) is needed, advice and support are on hand, right on your doorstep, including mentoring, counselling, family support and specialist services for children with additional needs.

[Find out more about our offer](#)



[Home](#) > [Families](#) > Advice and support



Advice and support

Find services to support parents, carers and families by using the links below or type a keyword into the search box.

All listings >	Child behaviour problems >
Keeping children and young people safe >	Community and faith groups >
Domestic and sexual violence >	Family breakdown >
Fostering and adoption >	Young parents >
Housing >	Disability, SEND >

Are you 16-19 and living in Islington? Need help to get into education, training or employment?

★ ★ ★
**ISLINGTON'S
PROGRESS
PLEDGE**

We pledge to help you by offering...

- Careers guidance with our qualified advisers Job coaching
- Mock interviews
- Support in English and maths up to Level 2
- One-to-one support to help you into education, a traineeship or apprenticeship, or employment
- Up to 100 hours of work experience or volunteering Help to access other support services

Contact the Progress team on **020 7527 7031** or email progress@islington.gov.uk



Glossary

Academies

Academies are independently managed, all-ability schools. The governing body sets its own admissions criteria, in line with the statutes laid down in the School Admissions Code.

Admission Authority

The body responsible for deciding the admission criteria and for allocating school places. In the case of community schools, this is the local authority and in the case of voluntary-aided schools, Free Schools and Academies it is the school's governing body.

Admission Criteria (or Oversubscription Criteria)

The rules by which applications will be prioritised for admission when there are more applicants than places available. These rules must be published on the school's website.

Children looked after/Previously looked after

A looked after child or a child who was previously looked after but immediately after being looked after became subject to an adoption, child arrangements, or special guardianship order including those who appear [to the admission authority] to have been in state care outside of England and ceased to be in state care as a result of being adopted.

A looked after child is a child who is (a) in the care of a local authority, or (b) being provided with accommodation by a local authority in the exercise of their social services functions (see the definition in Section 22(1) of the Children Act 1989).

An adoption order is an order under the Adoption Act 1976 (see Section 12 adoption orders) and children who were adopted under the Adoption and Children Act 2002 (see Section 46 adoption orders).

A 'child arrangements order' is an order settling the arrangements to be made as to the person with whom the child is to live under Section 8 of the Children Act 1989 as amended by Section 14 of the Children and Families Act 2014.

Section 14A of the Children Act 1989 defines a 'special guardianship order' as an order appointing one or more individuals to be a child's special guardian (or special guardians).

Community schools

Community schools are run by the local authority which employs the staff and owns the land and buildings. Islington Council sets the admissions criteria for community schools.

Cut-off distance

This is the distance of the last pupil admitted to the school under the 'distance' criterion. 'Cut-off' distances vary from year to year and are only given as a guide to help you assess the likelihood of being offered a place under the distance criterion.

For schools with a religious character (e.g., Catholic or Church of England schools) that use 'church' or 'faith' as one of their admission criteria, the 'cut-off distance' **only** applies to applicants considered under the final criterion of '**distance**' alone. It does not apply to other applicants considered under criteria with a higher priority (e.g., religious criteria related to faith or church).

Please note that living within the previous year's cut-off distance doesn't guarantee your child a place at the school.

Distances for Islington's community schools will be measured in a straight line (as the crow flies) from the home address to the midpoint of the school grounds, using the local authority's computerised measuring system. Those living closer to the school will receive higher priority.

Use the following link to find information on 'cut-off' distances for Islington schools
www.islington.gov.uk/cut-offdistance.

Equal Preference Scheme

Each preference is considered independently against the school's published admission criteria. If the applicant is eligible for admission to more than one school, the highest preference school is offered.

Family Information Service

[The Family Information Service \(FIS\)](#) gives free, impartial information, advice and guidance about services for children, young people and families in Islington. Find out about childcare, employment, benefits, support for disabled children and more.

Free schools

Free schools are independently managed, all-ability schools funded by the government. They are run on a not-for-profit basis and can be set up by charities, universities, independent schools, community and faith groups, teachers, parents and businesses. Free schools can change the length of school terms and the school day and do not need to follow the national curriculum.

Foundation schools

Foundation schools are run by their own governing body, which employs the staff and sets the admissions criteria. Land and buildings are usually owned by the governing body or a charitable foundation.

Home local authority

A child's home local authority (local council) is the local authority where they live, i.e. the council you pay your council tax to.

PAN (Published Admission Number)

The number of school places that the admission authority must offer in each relevant age group.

PAN-London Register (PLR)

Places at secondary schools in London are co-ordinated through the Pan-London Register admissions scheme. The scheme aims to simplify the secondary application process and ensure a fairer distribution of places available across London.

Parents and family members

A parent is any person who has parental responsibility or care of the child. Where admission arrangements refer to parent's attendance at church, it is sufficient for just one parent to attend. Family members include single parents and siblings.

Private fostering

Private fostering is when a child under the age of 16 (under 18 if disabled) is cared for by someone who is not their parent or a 'close relative'. This is a private arrangement made between a parent and a carer, for 28 days or more. Close relatives are defined as step-parents, grandparents, brothers, sisters, uncles or aunts. Private foster carers have a duty to inform their home local authority of such arrangements. This must also be declared on the admissions application form. Please see the back page of this brochure for further information.

Sibling

Sibling refers to a brother or sister, half-brother or sister, adopted brother or sister, stepbrother or sister, or the child of the parent or carer's partner, living in the same family at the same address.

Education, Health and Care Plan (EHCP)

The EHCP is a legal document issued by the home local authority detailing the specific needs, resources and provision required to support the child, and can include a named school that is suitable for providing education for that child. EHCPs can continue into further education and training, and for some young people, in order to complete a course or qualification, up to the age of 25.

Supplementary Information Form (SIF)

All parents who list their preferred schools on the local authority's online admission application are regarded as having made a valid application.

A supplementary information form may also be required for applicants considered under the criteria of faith schools, for boarding school and for selective schools. Please check the school's fact file for details.

Trust schools

A Trust school is a type of foundation school which forms a charitable trust with an outside partner. For example, a business or educational charity aiming to raise standards and explore new ways of working.

Voluntary-aided schools (VA)

Voluntary-aided schools are mainly religious or 'faith' schools, although anyone can apply for a place. As with foundation schools, the governing body employs the staff and sets the admissions criteria. School buildings and land are normally owned by a charitable foundation, often a religious organisation. The governing body contributes to building and maintenance costs.

School key dates

Open evenings in date order

School	Day	Date	Month	Year	From	To
Beacon High	Tuesday	17	September	2024	5.00pm	7.00pm
COLA-Highgate Hill	Wednesday	18	September	2024	4.30pm	7.00pm
Arts and Media School, Islington	Thursday	19	September	2024	5.00pm	7.00pm
COLA-I	Tuesday	24	September	2024	4.30pm	7.30pm
COLA-Highbury Grove	Wednesday	25	September	2024	5.00pm	7.00pm
Central Foundation Boys School	Thursday	26	September	2024	5.00pm 6.10pm	1 st tour 2 nd tour
EGA	Thursday	26	September	2024	5.00pm	7.30pm
St Aloysius' College	Tuesday	1	October	2024	4.30pm	7.30pm
Highbury Fields	Thursday	3	October	2024	5.00pm	7.00pm
St Mary Magdalene Academy	Thursday	3	October	2024	5.00pm	7.00pm
Dame Alice Owen's	Please see school website for further information					

Test dates in date order

School	Day	Date	Month	Year	Time
Dame Alice Owen's (Verbal Reasoning and 1 st round Musical Aptitude)	Monday	2	September	2024	Please check school website
COLA-Highgate Hill (Banding Test)	Saturday	21	September	2024	9.00am-1.00pm
Dame Alice Owen's (2 nd round Musical Aptitude)	W/C	23	September	2024	Please check school website
Dame Alice Owen's (Music and Maths)	Saturday	28	September	2023	Please check school website
St Mary Magdalene Academy (Aptitude Test)	Thursday	26	September	2024	Time to be confirmed by letter to parents who have registered

Section 6: Useful information and contacts

School	Day	Date	Month	Year	Time
COLA-Highgate Hill (Banding Test)	Saturday	28	September	2024	9.00am-1.00pm
COLA-Highgate Hill (Banding Test)	Saturday	5	October	2024	9.00am-1.00pm
COLA-Highgate Hill (Banding Test)	Saturday	12	October	2024	9.00am-1.00pm
COLA-Islington (Banding Test)	Saturday	12	October	2024	By appointment only
St Aloysius' College (Music Auditions)	Friday	18	October	2024	9.30am-12.00pm
COLA-Islington (Banding Test)	Saturday	16	November	2024	By appointment only
St Aloysius' College (Banding Test)	Saturday	7	December	2024	9.00am-11.00am
Central Foundation (Banding Test)	Please see school website for further information				

Open mornings in date order

School	Day	Date	Month	Year	From	To
Beacon High	Tuesday	10	September	2024	9.00am	10.00am
St Mary Magdalene Academy	Tuesday	10	September	2024	9.00am or 9.15am (Ticket only)	
St Mary Magdalene Academy	Wednesday	11	September	2024	9.00am or 9.15am (Ticket only)	
St Mary Magdalene Academy	Thursday	12	September	2024	9.00am or 9.15am (Ticket only)	
St Mary Magdalene Academy	Friday	13	September	2024	9.00am or 9.15am (Ticket only)	
Elizabeth Garrett Anderson	Tuesday	17	September	2024	9.15am	10.30am
St Mary Magdalene Academy	Tuesday	17	September	2024	9.00am or 9.15am (Ticket only)	
Beacon High	Wednesday	18	September	2024	9.00am	10.00am
St Mary Magdalene Academy	Wednesday	18	September	2024	9.00am or 9.15am (Ticket only)	

School	Day	Date	Month	Year	From	To
COLA-Highgate Hill	Thursday	19	September	2024	9.00am	10.00am
St Mary Magdalene Academy	Thursday	19	September	2024	9.00am or 9.15am (Ticket only)	
COLA-Highgate Hill	Friday	20	September	2024	9.00am	10.00am
St Mary Magdalene Academy	Friday	20	September	2024	9.00am or 9.15am (Ticket only)	
COLA-Highgate Hill	Monday	23	September	2024	9.00am	10.00am
COLA-Highgate Hill	Tuesday	24	September	2024	9.00am	10.00am
Elizabeth Garrett Anderson	Tuesday	24	September	2024	9.15am	10.30am
Highbury Fields	Tuesday	24	September	2024	Check the school's website	
St Mary Magdalene Academy	Tuesday	24	September	2024	9.00am or 9.15am (Ticket only)	
COLA-Highgate Hill	Wednesday	25	September	2024	9.00am	10.00am
Highbury Fields	Wednesday	25	September	2024	See the school's website	
St Mary Magdalene Academy	Wednesday	25	September	2024	9.00am or 9.15am (Ticket only)	
Arts and Media School, Islington	Thursday	26	September	2024	9.15am	11.00am
Beacon High	Thursday	26	September	2024	9.00am	10.00am
COLA-Highgate Hill	Thursday	26	September	2024	9.00am	10.00am
COLA-Islington	Thursday	26	September	2024	9.00am	10.15am
Highbury Fields	Thursday	26	September	2024	See the school's website	
COLA-Highgate Hill	Friday	27	September	2024	9.00am	10.00am
St Mary Magdalene Academy	Friday	27	September	2024	9.00am or 9.15am (Ticket only)	
Central Foundation	Tuesday	1	October	2024	9.30am	10.30am

School	Day	Date	Month	Year	From	To
Elizabeth Garrett Anderson	Tuesday	1	October	2024	9.15am	10.30am
Highbury Fields	Tuesday	1	October	2024	See the school's website	
St Mary Magdalene Academy	Tuesday	1	October	2024	9.00am or 9.15am (Ticket only)	
Central Foundation	Wednesday	2	October	2024	9.30am	10.30am
COLA-Highbury Grove	Wednesday	2	October	2024	9.00am	10.00am
Highbury Fields	Wednesday	2	October	2024	See the school's website	
St Aloysius' College	Wednesday	2	October	2024	9.15am	10.15am
St Mary Magdalene Academy	Wednesday	2	October	2024	9.00am or 9.15am (Ticket only)	
Arts and Media School, Islington	Thursday	3	October	2024	9.15am	11.00am
COLA-Islington	Thursday	3	October	2024	9.00am	10.15am
Elizabeth Garrett Anderson	Thursday	3	October	2024	9.15am	10.30am
St Aloysius' College	Thursday	3	October	2024	9.15am	10.15am
Beacon High	Friday	4	October	2024	9.00am	10.00am
St Aloysius' College	Friday	4	October	2024	9.15am	10.15am
St Aloysius' College	Saturday	5	October	2024	9.00am	12.00pm
Beacon High	Monday	7	October	2024	9.00am	10.00am
St Aloysius' College	Monday	7	October	2024	9.15am	10.15am
Central Foundation	Tuesday	8	October	2024	9.30am	10.30am
St Aloysius' College	Tuesday	8	October	2024	9.15am	10.15am
Central Foundation	Wednesday	9	October	2024	9.30am	10.30am
COLA -Highbury Grove	Wednesday	9	October	2024	9.00am	10.00am
St Aloysius' College	Wednesday	9	October	2024	9.15am	10.15am

School	Day	Date	Month	Year	From	To
Arts and Media School, Islington	Thursday	10	October	2024	9.15am	11.00am
COLA-Islington	Thursday	10	October	2024	9.00am	10.15am
St Aloysius' College	Thursday	10	October	2024	9.15am	10.15am
St Aloysius' College	Friday	11	October	2024	9.15am	10.15am
Beacon High	Tuesday	15	October	2024	9.00am	10.00am
COLA-Highbury Grove	Wednesday	16	October	2024	9.00am	10.00am
Beacon High	Wednesday	23	October	2024	9.00am	10.00am

Do you know someone who is under 16 and not living at home?



“My mother recently had an operation so I’m going to be staying with family friends for the next 3 months”



“Things got really bad at home, I would argue with my parents all the time. Now I live with my friends and her parents”



“I came to the UK on holiday but ended up living with my cousins. I’ve been in the UK for over 5 years now”

If you know a child in this situation or would like more information please call the Islington Children’s Services Contact Team on **020 7527 7400** or email csctreferrals@islington.gov.uk



The Islington School Nursing Service

The Islington School Nursing Service works in every school in the borough to support the health needs of children and young people aged 5-19, providing a link between school, home and the community.

Our aim is to ensure that young people's health needs do not impact on their ability to access education.

The service offers health promotion workshops and health screening advice in all Islington schools. In addition, there are health and wellbeing clinics in secondary schools where young people can speak to a member of the school health team about any health or wellbeing concerns.

Parents and young people can contact the service by calling **020 3316 8021** or emailing: whh-tr.islingtonschoolnursing@nhs.net

For more information and a referral form please visit our website [Whittington Health Trust](#).

